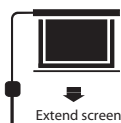


Motorized screen (M) manual control method:

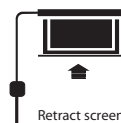
- Screen manual control in-line switch (Figure 1)
- Extend screen (Figure 2): Press “=” switch, screen will automatically lower down to desire limit position.
- Retract screen (Figure 3): Press “-” switch, screen will autoatically retract to setting limit position.
- Stop screen: Press middle “o” switch, screen will stop immediately.



Figure 1

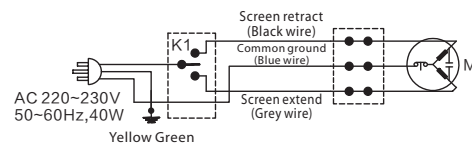


Extend screen
Figure 2



Retract screen
Figure 3

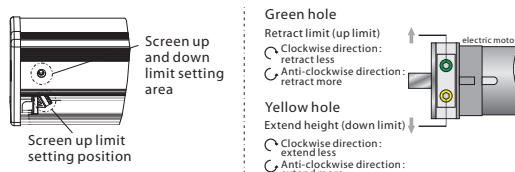
Motorized screen (M) circuit diagram:



Screen retract height (Up limit) and extend height (down limit) adjustment:

- If have to adjust height limit for installation environment reasons, you can adjust the limit setting by using a provided adjustment bar insert into the adjustment hole which on the left down area of motor. As below figure:

Note: When screen retract height over the setting limit, fabric will automatically lower down. For this case, please press stop switch (By manual or RF control), micro adjust on green knob in clockwise direction is fine.



- Trouble shooting: Product has the over retract protection system. When screen over retract, under bar will automatically lower which means have to reset the up limit. Please check motor limit setting method for reference.

Note:

Please operate carefully, in case of screen over retract causing motor or screen damage. While extending more fabric, please add black boarder within 10CM or it will cause fabric break and fall.

Screen electric data: Voltage AC220-230V/50-60Hz, current 0.5A, power 100W.

RF remote (F): Voltage 3V, use CR2450*1 battery, ratio frequency: 433Hz. maximum control distance 15m.

IR remote (R): Voltage 12V, use 27A*1 battery, maximum control distance 8m.

Grandview

Maintain Screen:

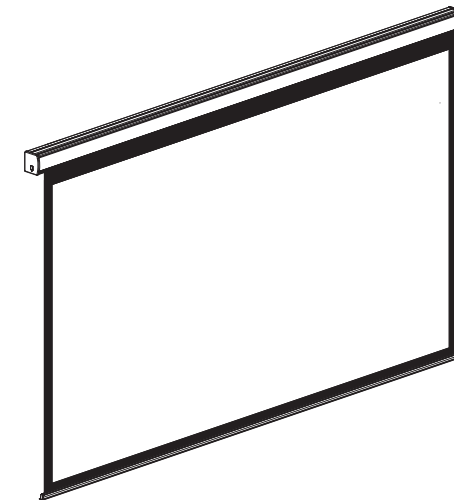
For long lasting enjoying the best viewing experience of Grandview screen, please retract screen into casing while not use. Before retracting into casing, please check screen front and back side to ensure surface has no obvious dust, insects or anything dirty. If there's anything dirty, please use soft cloth clean it carefully first.

Cleaning Screen:

Please use warm water mixed with mild detergent slightly clean the dirt on screen casing or surface (Please clean gentle instead of roughly). Then use a clean soft cloth or towel dry it, please be noted it can't be natural air drying.

Please don't use any solvent or chemical liquid or any frictional cleaner, or these cleaner will cause permanent damage on fabric.

Grandview



Instruction Manual Of Fancy Series Motorized Screen

In-line switch motorized screen & Intelligent control motorized screen

Model:

FC-M

FC-MI

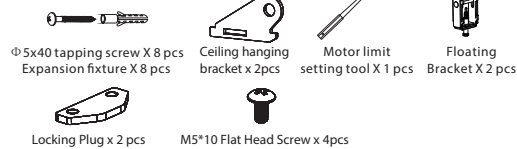
FC-MF

Dear Customers:

Thank you for purchasing a Grandview projection screen. Before use, please read instruction carefully. After installation, please store instruction for future reference.

Preparation for installation

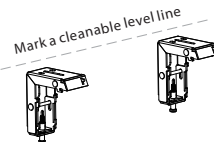
Accessories pack:



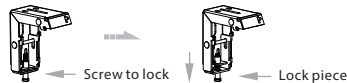
- Please prepare for suitable tools such as gradienter, tape, marker, etc.
- Please make sure precise installation distance and proper installation position for upper and nether mounting brackets.
- Use the proper screws for installation according to the site. (use tapping screws for wooden wall and tapping screws with expansion fixture for concrete wall)
- After installation, screen left and right side ensure flat and level.

Wall/Ceiling installation method

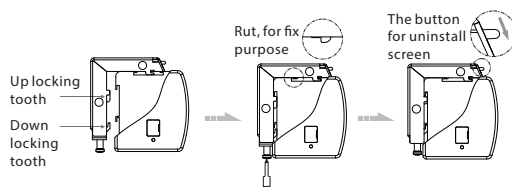
- Install bracket onto wall/ceiling that can bear such weight, and keep screen two sides on a same level. (Distance from casing end with 10cm), as below figure:



- Loosen the down screw until the screw can cover the casing, as figure:



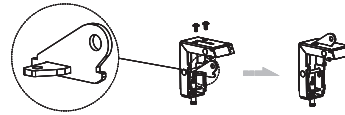
- Hold the casing two ends flatly onto the bracket then push into the bracket, when the locking tooth fixed, you will hear a locking sound that means screen already fixed onto bracket safely. Lock screw and fix screen. As figure:



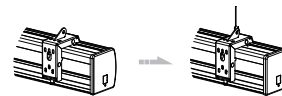
Note: When taking off screen, loosen the bottom screw first and push the top loosen button, then you can easily take the screen off, as above figure:

Ceiling hanging method:

- Insert the locking plug into the hole of the ceiling hanging bracket. Use ceiling hanging bracket lock into the rut and it has a hanging hole there, as figure:



- Take reference same as wall/ceiling installation, measure installation distance and mark position, the fix screen casing steady with bracket.
- According to site installation height, install hook onto ceiling, then hang the screen through bracket hole. As figure:



Warning:

Before operate screen, make sure the sticker on casing and under bar is removed.

Importance:

- Please make sure the installation position (ceiling or wall) or hang device can suffer from at least 25KG, otherwise it may cause danger.
- The product is using single-phase AC power, please use a socket with earth wire and make sure the earth wire is well connected.
- For in-line switch motorized screen, if necessary equip with extra high voltage control, please must operate by a professional engineer, and make sure central control between screen retract and screen expand has timing delay device.(0.2 second at least)

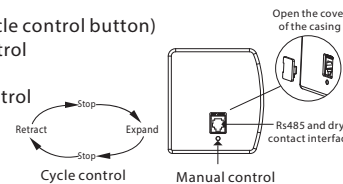
Power Connect:

Grandview screen will pre-equip with standard plug for your local market, only just connect plug to the socket, you can enjoy the use of Grandview screen immediately.

Fabric control instruction

Intelligent motorized screen has 4 control options:

- Manual control (cycle control button)
- IR control or RF control
- Dry contact control
- RS485 or RS232 control

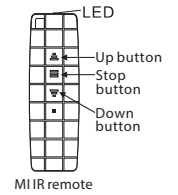


A. Manual control:

Manual control button is on the left side of the casing (close to RS485 and dry contact interface), this is a cycle control button.

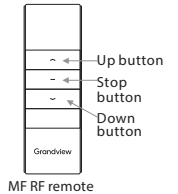
B. IR control MI or RF control MF:

- Press Up button, screen retract
- Press Stop button, screen stop
- Press Down button, screen expand
- RF remote is pre-setting in factory with the screen, also can reset if necessary.



Remote pairing:
It's the remote pairing status once motor connect to the power within 10 seconds. Press UP & STOP button together for remote pairing with screen, once done, operate screen go down and go up once for test.

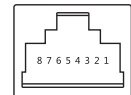
Remote un-pairing:
It's the remote pairing status once motor connect to the power within 10 seconds. Press UP & STOP button together for clear the memory, once done, operate screen go down and go up once for test.



C. Dry contact control

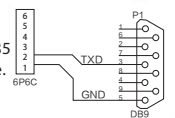
Please check the wire and function in the below sheet and picture for RJ12 and RJ45:

Wire	1	2	3	4	5	6	7	8
Model A/B Casing	5A	3B	Common	Down	Stop	Up		
Model C Casing	5A	3B	Common Wire	Stop	Down	Up		



D. RS485 or RS232 control:

Connect the 6P6C wire through RJ12 interface, count from left side, 1~2 is control wire for RS485 control. 1 is D-, 2 is D+. RS 232 wiring is as figure.

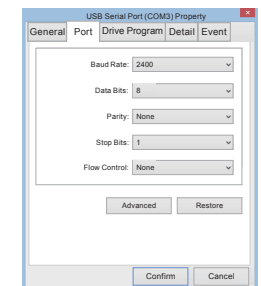


RS485/RS232 port setting:

- Baud Rate: 2400
- Data Bits: 8
- Odd-even check: None
- Stop bits: 1

Hexadecimal control code:

- Up: ff ee ee ee dd
 - Stop: ff ee ee ee cc
 - Down: ff ee ee ee ee
- Some central control need to reset address code: ff ee ee ee aa



Notice:

- While connecting the RS 232 or RS485, if after plug in still can't control screen for operation, you may need to exchange the two control wire.
- Loop resistance is under 20Ω.
- Can't work besides high voltage wire.