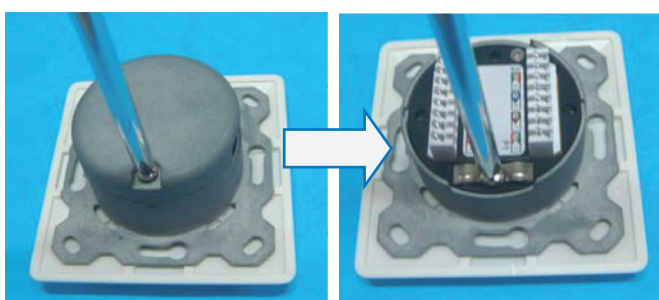


Color-coding information for T568A & T568B wiring.

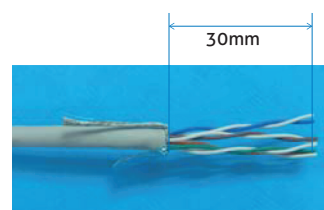
	T568A	T568B
Pin 1	White / Green	White / Orange
Pin 2	Green	Orange
Pin 3	White / Orange	White / Green
Pin 4	Blue	Blue
Pin 5	White / Blue	White / Blue
Pin 6	Orange	Green
Pin 7	White / Brown	White / Brown
Pin 8	Brown	Brown

User Guide

1.

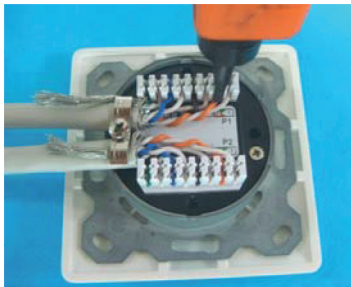


2.



Strip 30mm cable jacket approximately, and separate the wires into 4 pairs

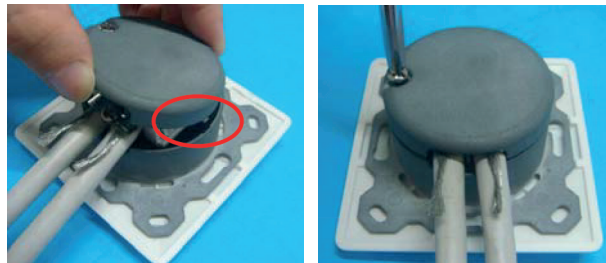
3.



Place the cable(s) underneath the M-shape cable holder properly, make sure the foil or braid shield contact with the cable holder, and then fasten the screw.

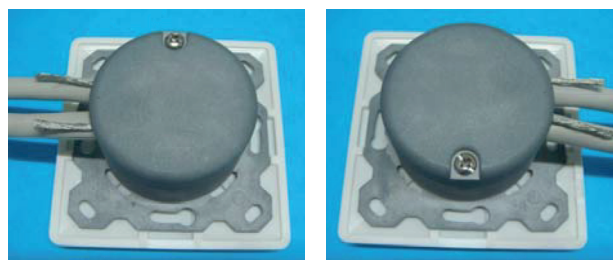
Follow the wiring instruction to push the wires by KRONE impact tool.

4.



Adjust the gap on the cover to fit the cables. Latch the snag (the circle in the figure above) to the hole on the body and then fasten the screw.

5.



It's done.

⚠ SAFETY INSTRUCTION

Avoid connection errors - read installation instructions carefully before connecting!
Unplug the RJ45 Plug only when without voltage. Unplugging of device under voltage (e.g. POE) may damage the contacts. Only be installed by qualified personnel. The safety requirements must be observed.

⚠ SICHERHEITSHINWEIS

Anschlussfehler vermeiden - vor dem Anschluss Montageanleitung sorgfältig lesen!
Ziehen des RJ45 Steckers nur bei Geräten ohne Spannung. Ausstecken unter Spannung (z.B. POE) kann zu Schäden an den Kontakten führen! Die Installation ist nur von Fachpersonal durchzuführen. Hierbei sind Sicherheitsanforderungen zu beachten.