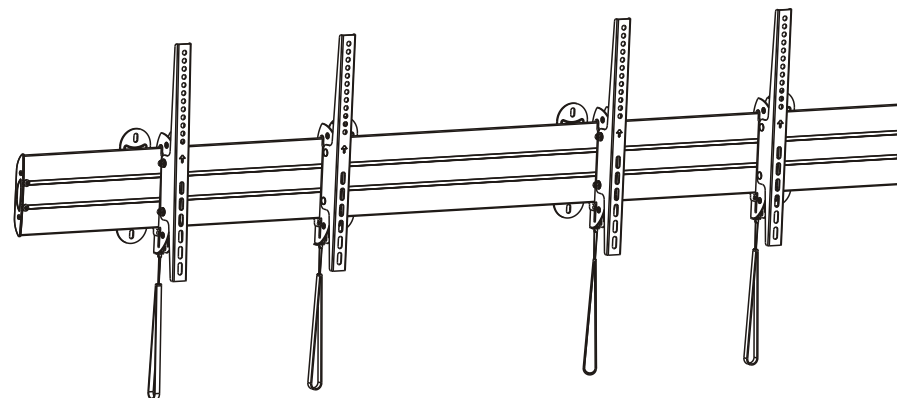


Menu Board Wall Mount



PUREMounts® DS

is a trademark of PureLink GmbH

Von-Liebig-Straße 10
D-48432 Rheine
Germany

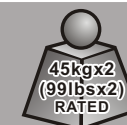


CAUTION: DO NOT EXCEED
RATED LISTED WEIGHT. SERIOUS
INJURY OR PROPERTY DAMAGE
MAY OCCUR!

PDS-2402



200x200/300x300
400x200/400x400
600x400



ISSUED: MAY. 2014

NOTE: Read the entire instruction manual before you start installation and assembly.

WARNING

- Do not begin the installation until you have read and understood all the instructions and warnings contained in this installation sheet. If you have any questions regarding any of the instructions or warnings, please contact your local distributor.
- This mounting bracket was designed to be installed and utilised **ONLY** as specified in this manual. Improper installation of this product may cause damage or serious injury.
- This product should only be installed by someone with good mechanical ability who has basic building experience and fully understands this manual.
- Make sure that the supporting surface will safely support the combined weight of the equipment and all attached hardware and components.
- If mounting to wood wall studs, make sure that mounting screws are anchored into the center of the studs. The use of a stud finder is highly recommended.
- Always use an assistant or mechanical lifting equipment to safely lift and position the equipment.
- Tighten screws firmly, but do not over tighten. Over tightening can cause damage to the items, This greatly reduces their holding power.
- This product is intended for indoor use only. Using this product outdoors could lead to product failure and personal injury.

Component Checklist

IMPORTANT: Ensure that you have received all parts according to the component checklist prior to installation. If any parts are missing or faulty, telephone your local distributor for a replacement.



wall plate (x1)
A



connecting fitting (x1)
B



left adapter bracket (x2)
C

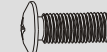


right adapter bracket (x2)
D

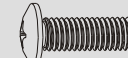
Package M (x2)



M5x14 (x4)
M-A



M6x14 (x4)
M-B



M8x20 (x4)
M-C



M6x30 (x4)
M-D



M8x30 (x4)
M-E



washer (x4)
M-F



small spacer (x8)
M-G



big spacer (x4)
M-H

Package W



ST6.3x55 (x8)
W-A

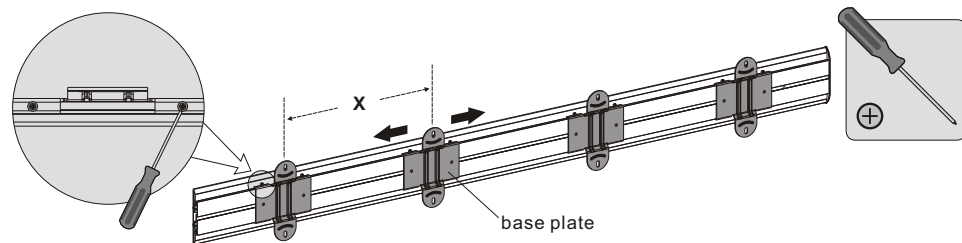


concrete anchor (x8)
W-B

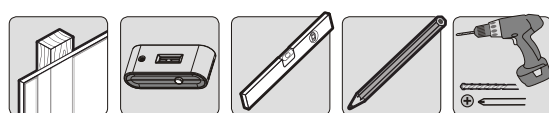


D6 washer (x8)
W-C

1a. For Wood Stud Wall Mounting

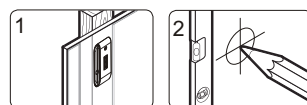
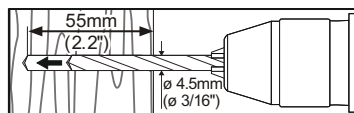
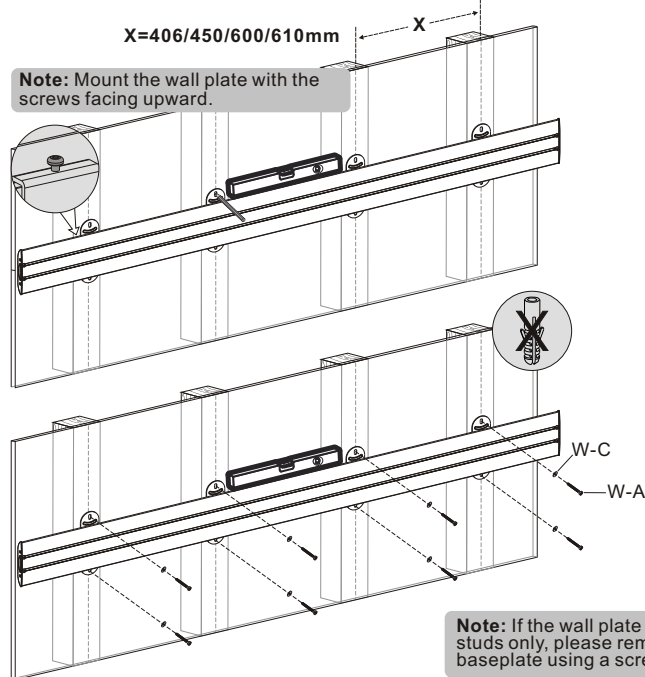


The distance between the baseplates can be adjusted to fit the distance between the wood studs by using a screwdriver.

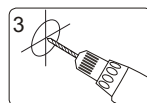


X=406/450/600/610mm

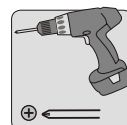
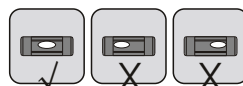
Note: Mount the wall plate with the screws facing upward.



Find and mark the exact location of mounting holes



Drill pilot holes

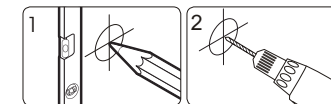
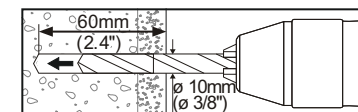
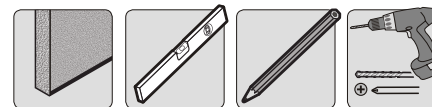


Screw the wall plate onto the wall

⚠ WARNING

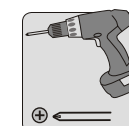
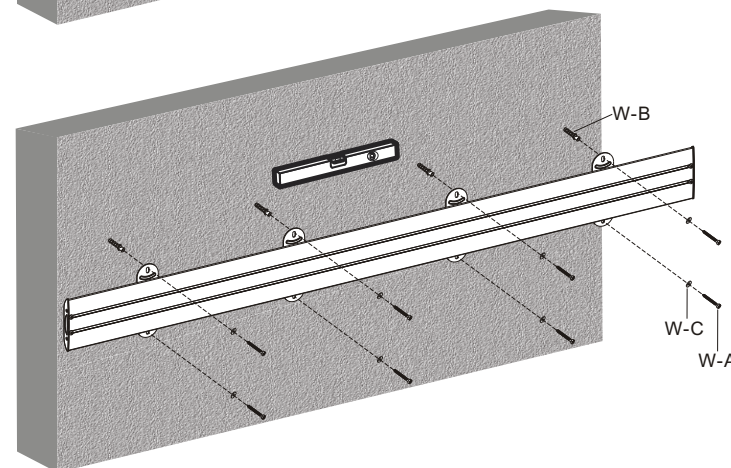
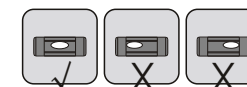
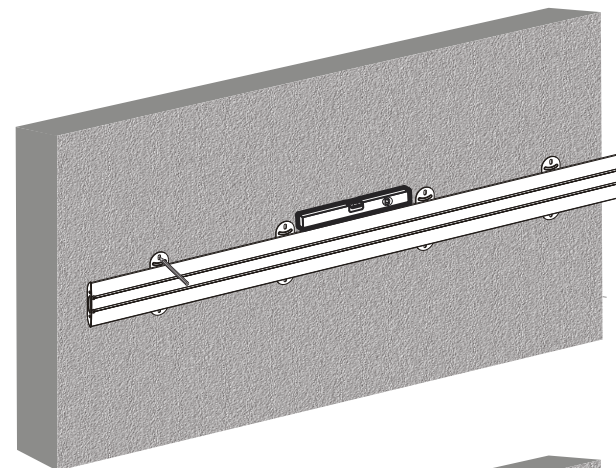
- Make sure that mounting screws are anchored into the center of the studs. The use of a stud finder is highly recommended.
- Installers are responsible to provide hardware for other types of mounting situations.
- Installers must verify that the supporting surface will safely support the combined weight of the equipment and all attached hardware and components.

1b. For Solid Brick and Concrete Mounting



Mark the exact location of mounting holes

Drill pilot holes

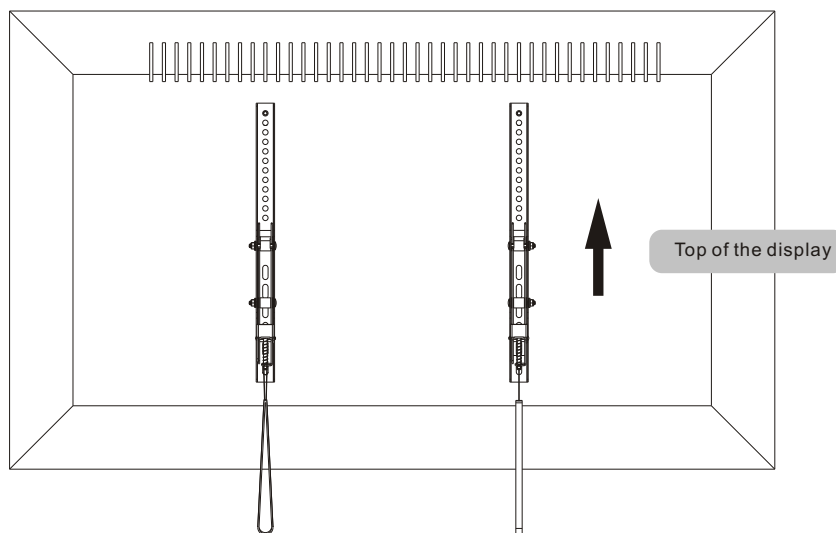


Screw the wall plate onto the wall

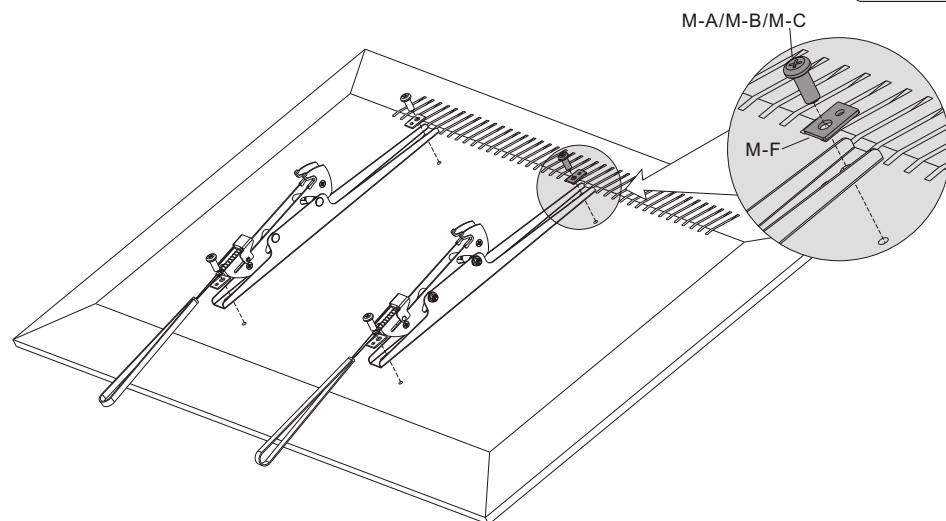
⚠ WARNING

Installers must verify that the supporting surface will safely support the combined weight of the equipment and all attached hardware and components.

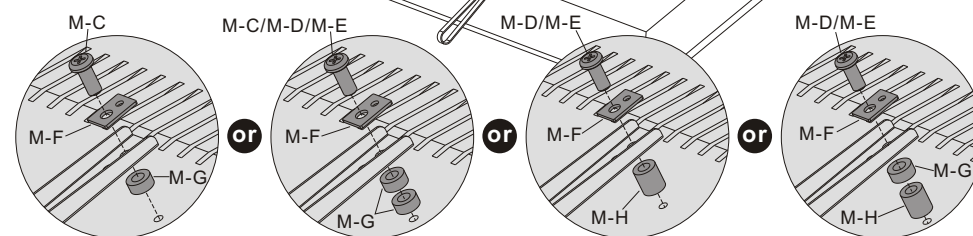
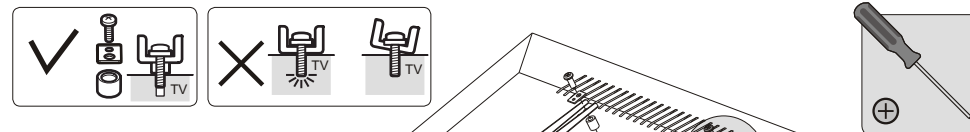
2. Installing the Adapter Brackets



2-1 For Flat Back Screens



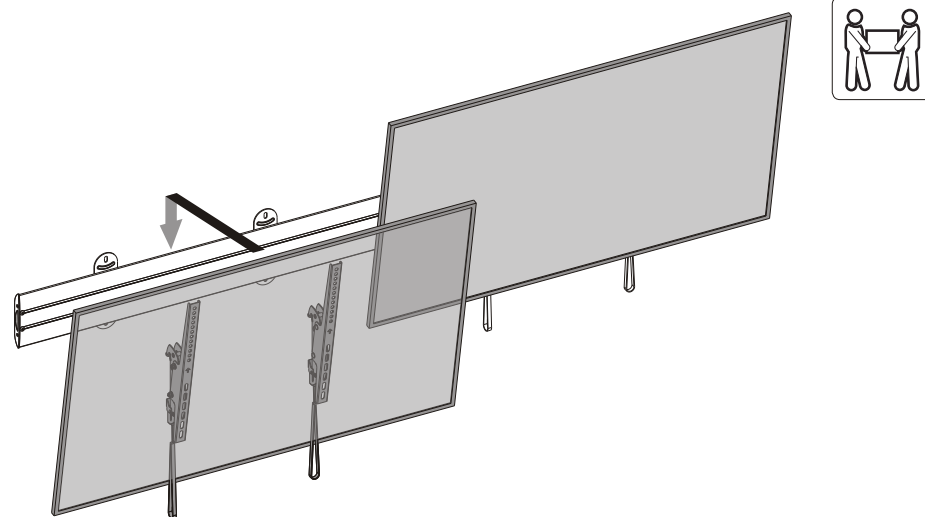
2-2. For Bump-out or Recessed Back Screens

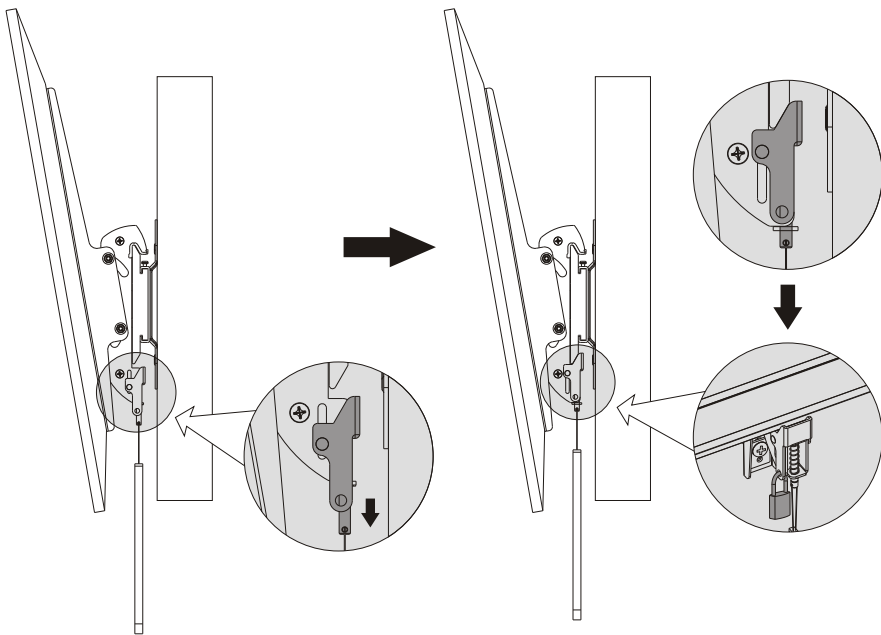


Note: Choose the appropriate screws, washers and spacers (if necessary) according to the type of screen.
 • Position the adapter brackets as close as possible to the center of the display.
 • Screw the adapter brackets onto the display.

⚠ Tighten all screws but do not over tighten.

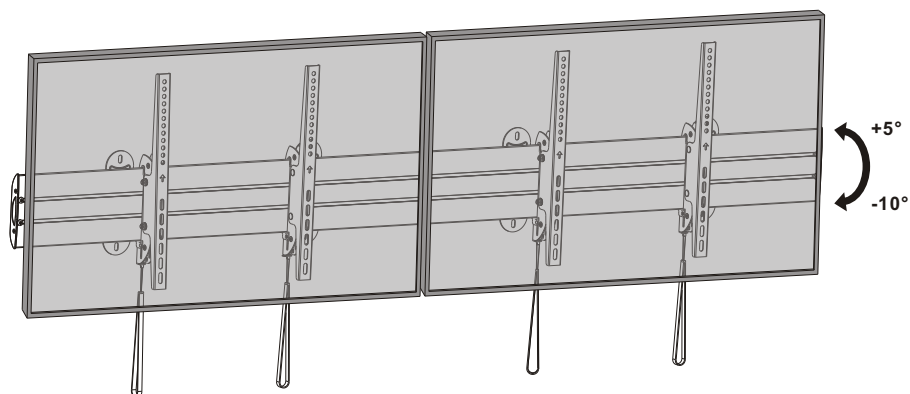
3. Hanging the Displays onto the Wall Plate



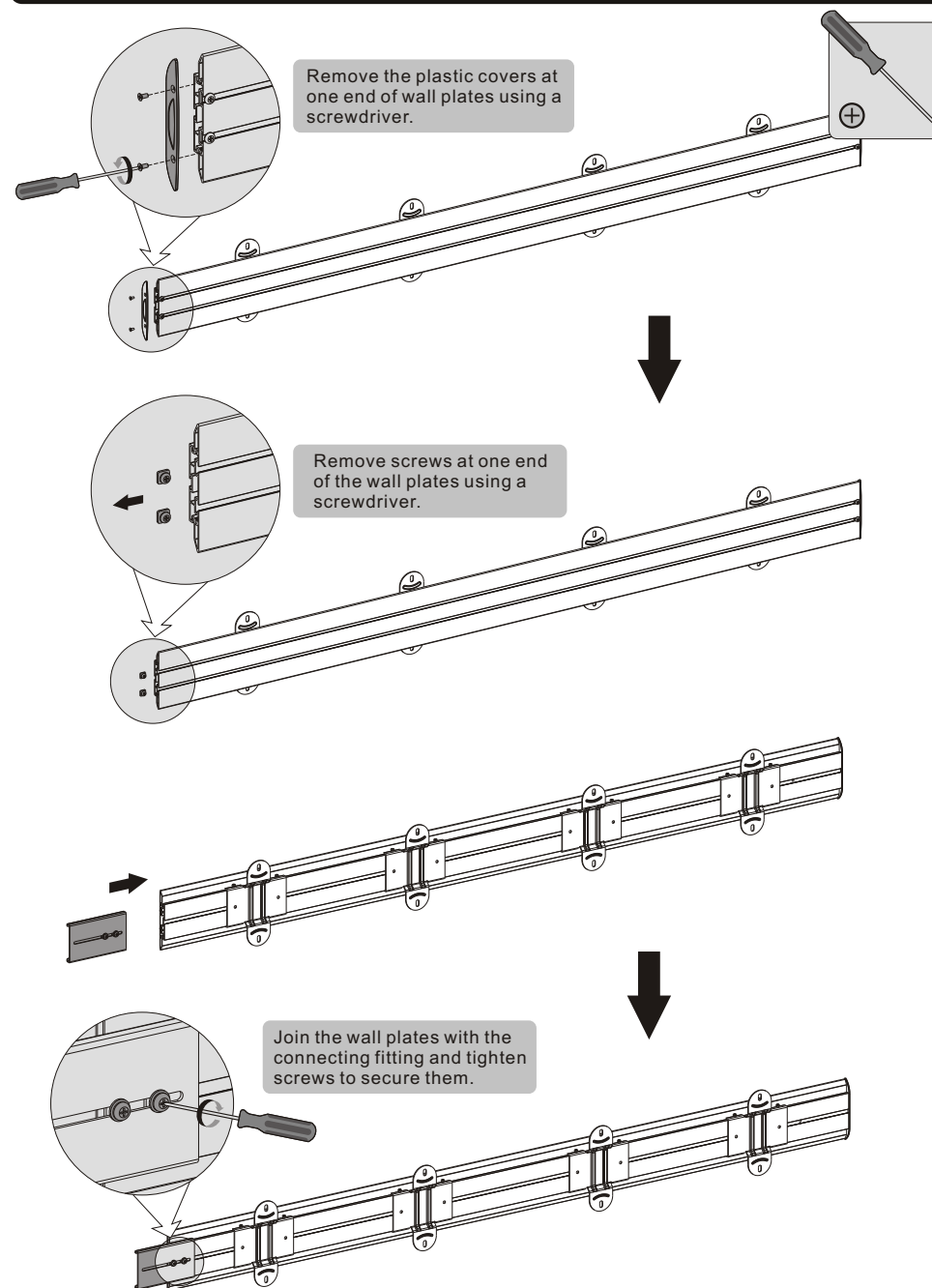


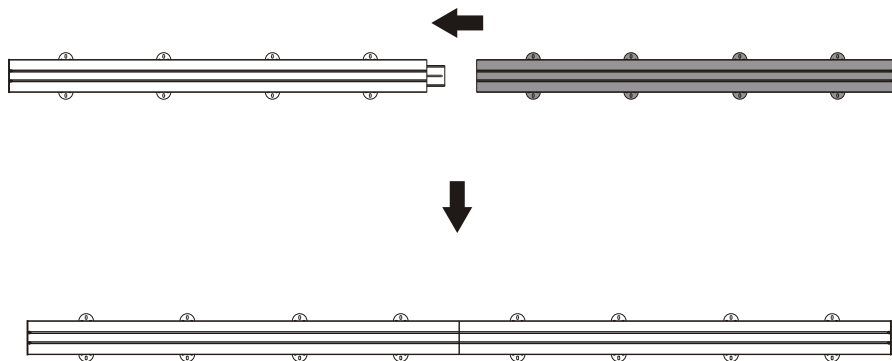
- Lift the display carefully and pull downward two straps at the same time, then hook the adapter brackets to the wall plate.
- Fasten the adapter brackets to the wall plate by releasing the straps.
- Use the padlocks to prevent the displays from being stolen (The padlocks are not included).

4. Adjustment

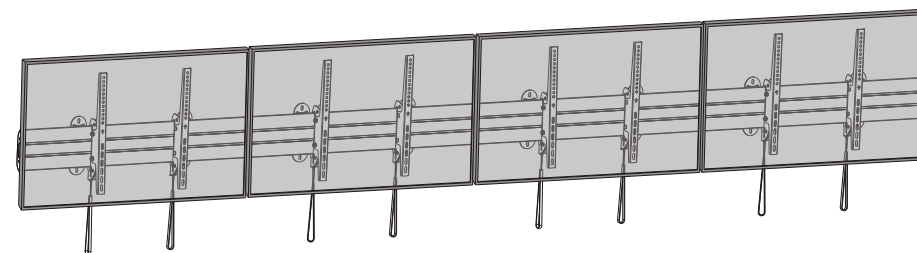
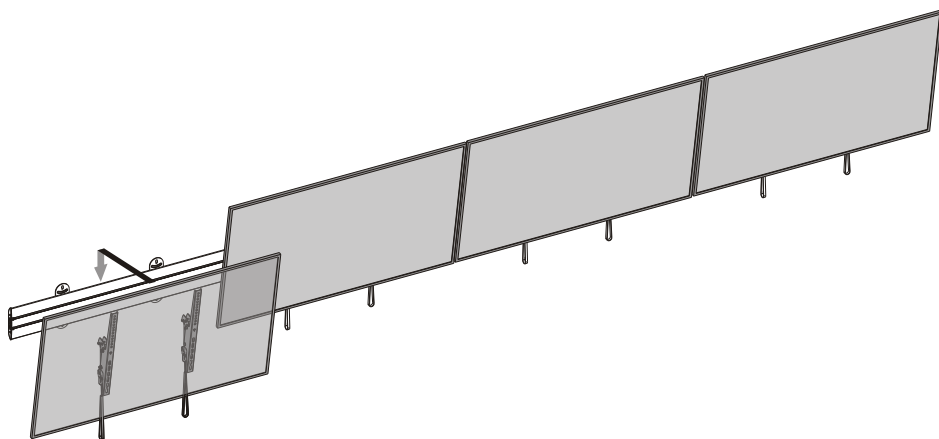


For Multiple Wall Plates Installation





Then skip to step1 for installation.



Maintenance

- Check that the bracket is secure and safe to use at regular intervals(at least every three months).
- Please contact your distributor if you have any questions.